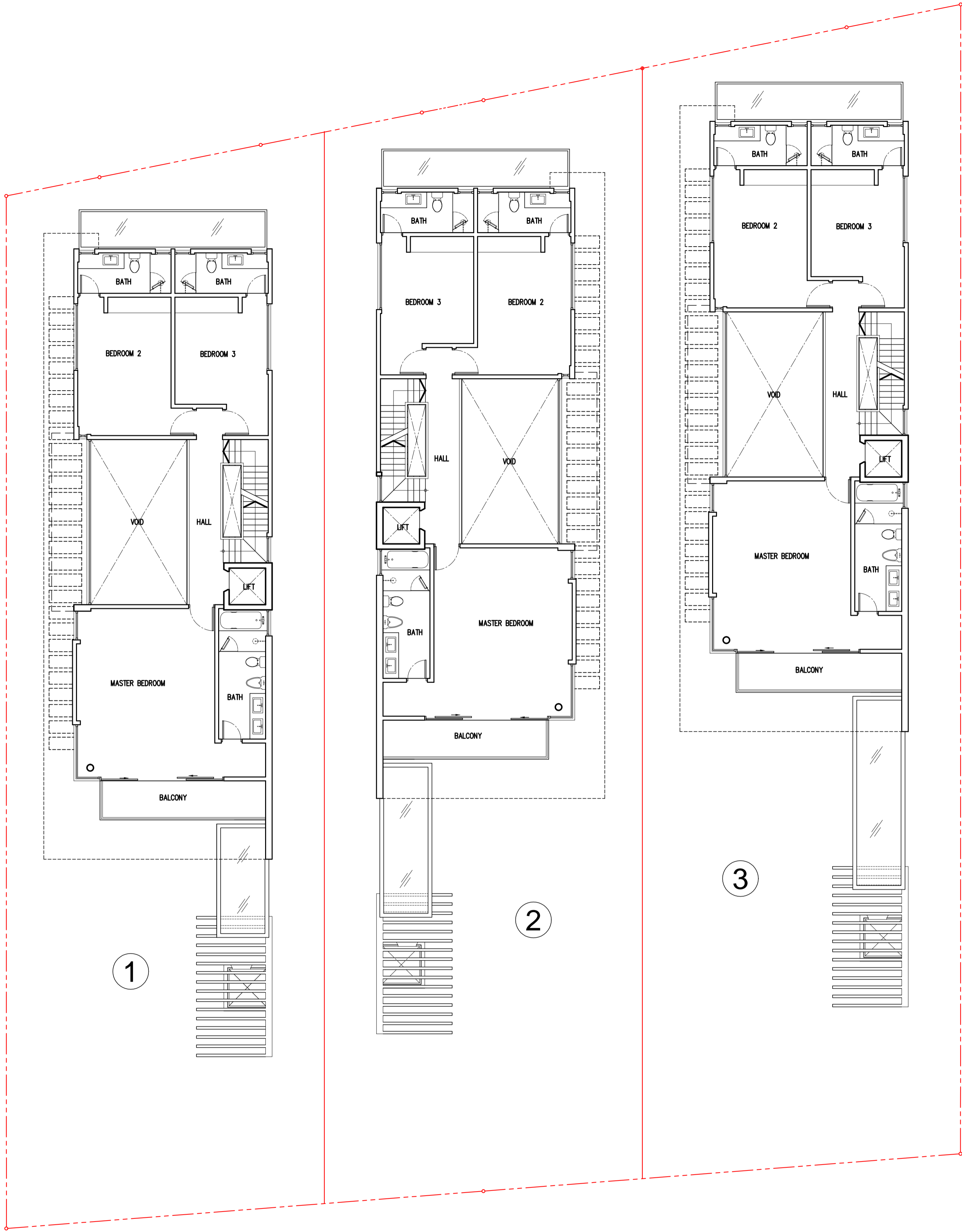


TOH HEIGHTS

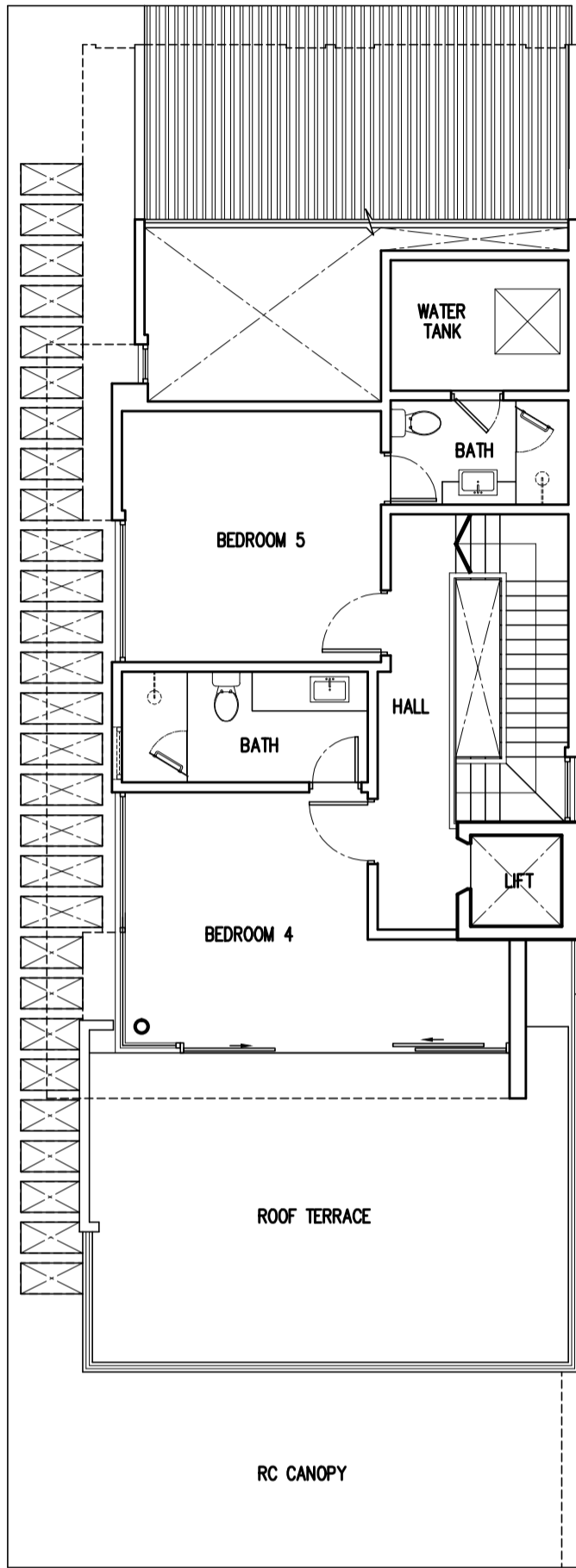
1ST STOREY PLAN

Disclaimer : All possible care has been taken to ensure that all information provided here are accurate. However, we the Developer/owner and/or our contractors/consultants/agents cannot be held responsible for any inaccuracies or variations whatsoever. Asking Prices are subject to change at our full discretion. All plans, renderings & specifications are subject to change at the full discretion of the Architect and/or Engineer. They are also subject to approval by the relevant government authorities. All plans and areas are subject to final survey. Changes done after TOP or CSC also require approval by the relevant authorities and certification by a professional engineer. Furniture/ wardrobes/ cabinets/ movable items shown in the floor plans are only for reference & are not

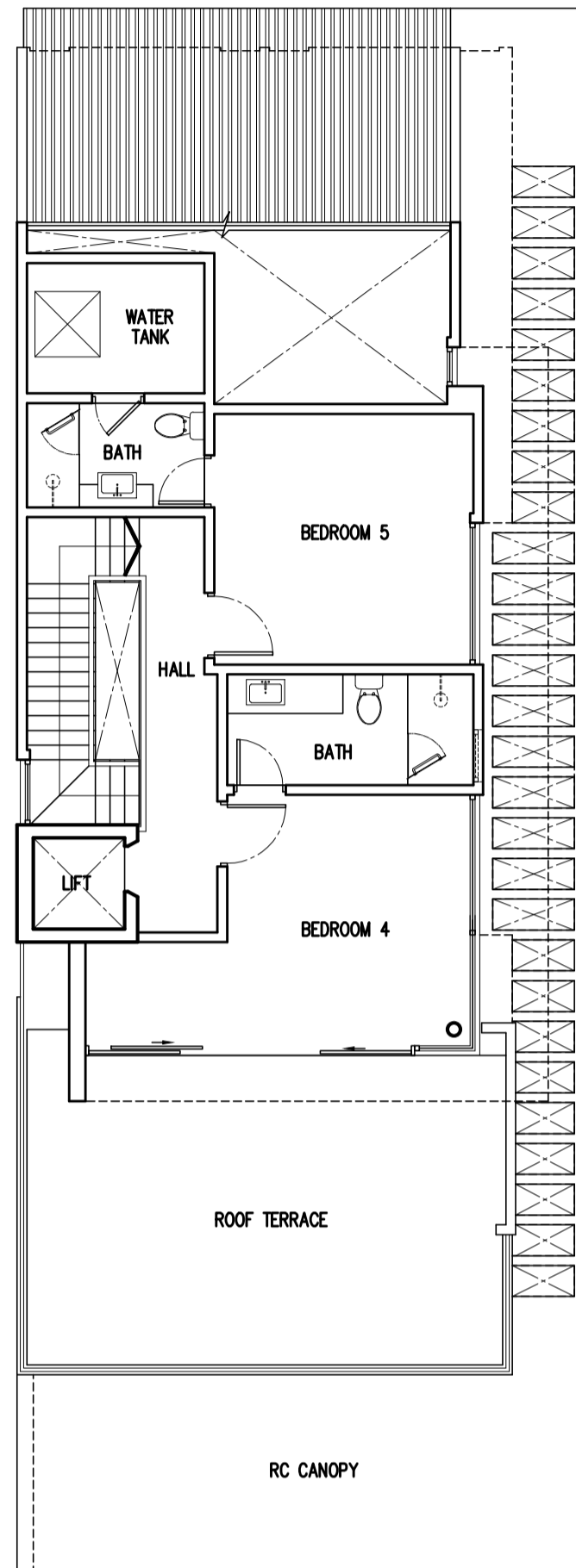


 **2ND STOREY PLAN**

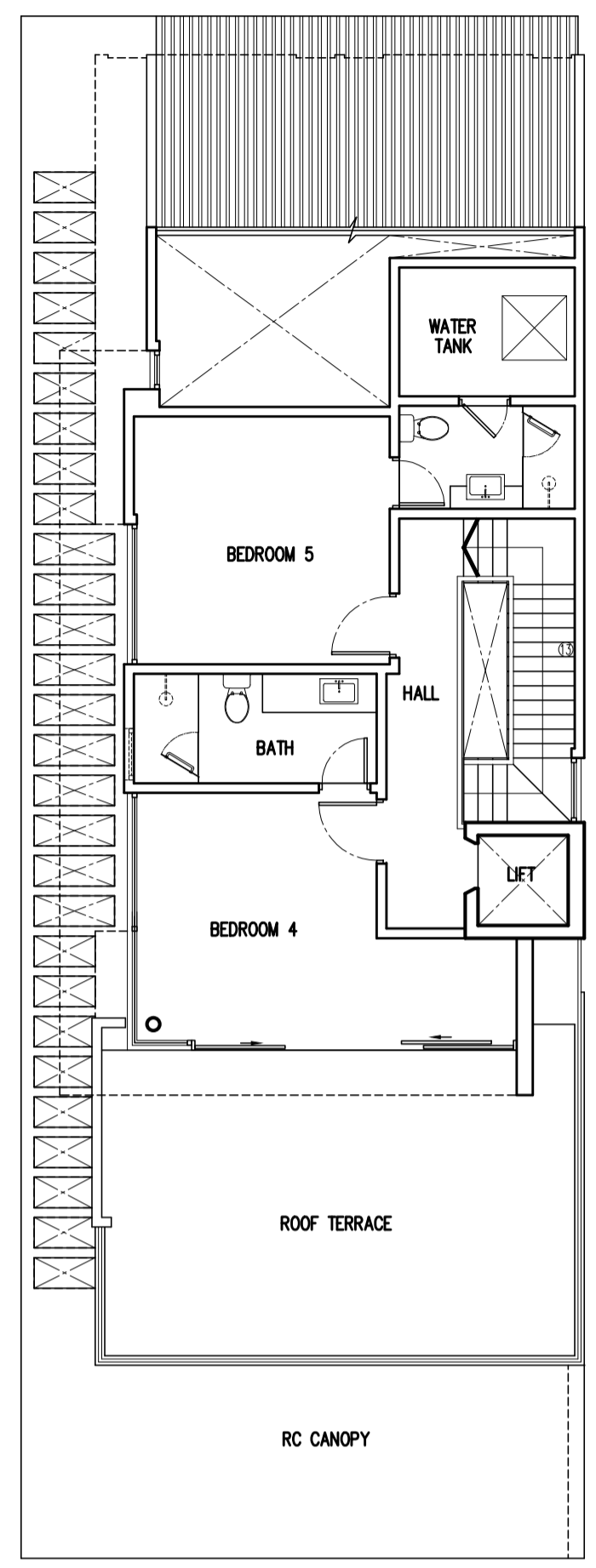
Disclaimer : All possible care has been taken to ensure that all information provided here are accurate. However, we the Developer/owner and/or our contractors/consultants/agents cannot be held responsible for any inaccuracies or variations whatsoever. Asking Prices are subject to change at our full discretion. All plans, renderings & specifications are subject to change at the full discretion of the Architect and/or Engineer. They are also subject to approval by the relevant government authorities. All plans and areas are subject to final survey. Changes done after TOP or CSC also require approval by the relevant authorities and certification by a professional engineer. Furniture/ wardrobes/ cabinets/ movable items shown in the floor plans are only for reference & are not



1



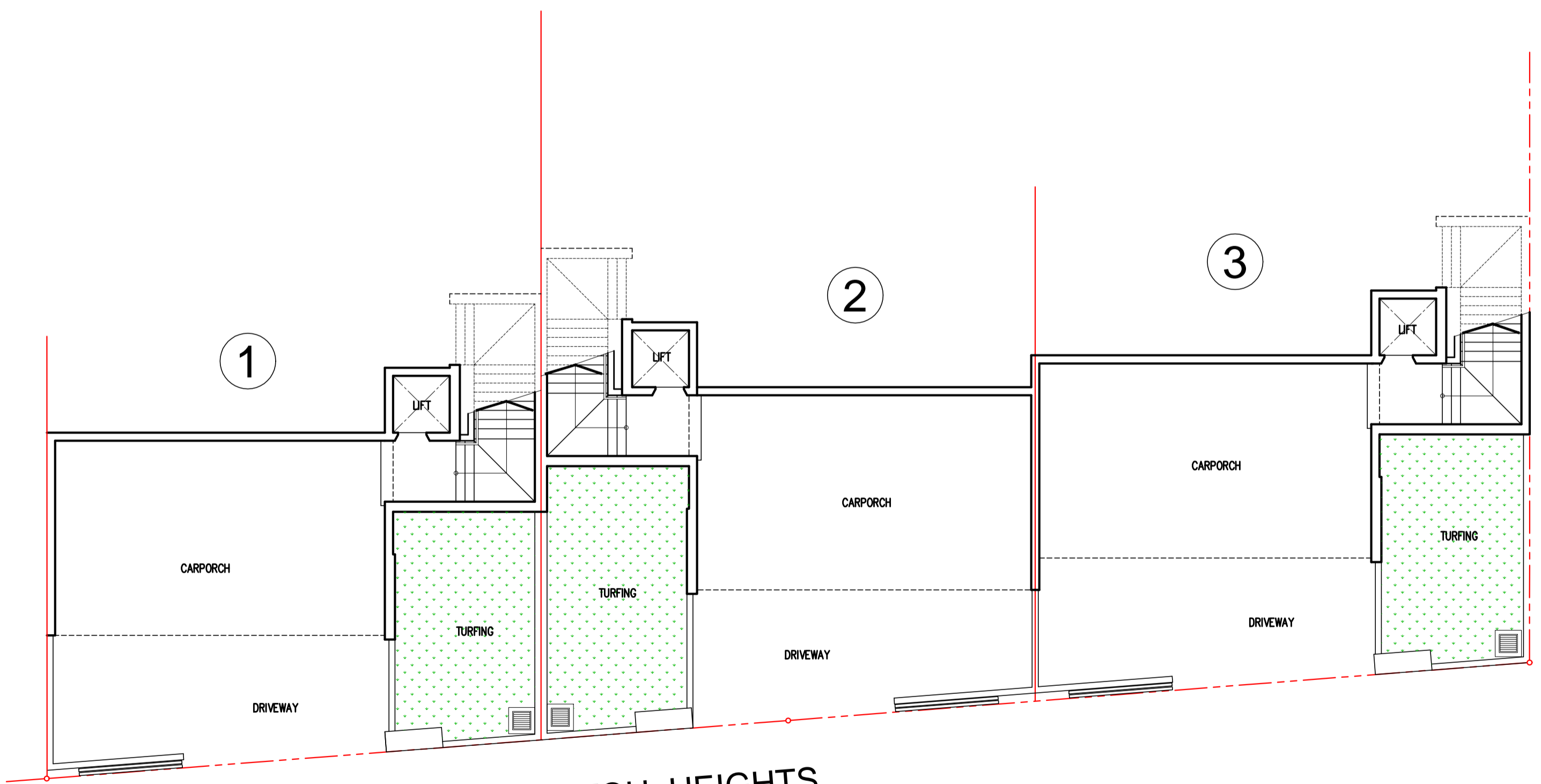
2



3

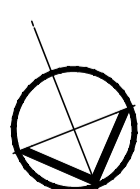


Disclaimer : All possible care has been taken to ensure that all information provided here are accurate. However, we the Developer/owner and/or our contractors/consultants/agents cannot be held responsible for any inaccuracies or variations whatsoever. Asking Prices are subject to change at our full discretion. All plans, renderings & specifications are subject to change at the full discretion of the Architect and/or Engineer. They are also subject to approval by the relevant government authorities. All plans and areas are subject to final survey. Changes done after TOP or CSC also require approval by the relevant authorities and certification by a professional engineer. Furniture/ wardrobes/ cabinets/ movable items shown in the floor plans are only for reference & are not



TOH HEIGHTS

Disclaimer : All possible care has been taken to ensure that all information provided here are accurate. However, we the Developer/owner and/or our contractors/consultants/agents cannot be held responsible for any inaccuracies or variations whatsoever. Asking Prices are subject to change at our full discretion. All plans, renderings & specifications are subject to change at the full discretion of the Architect and/or Engineer. They are also subject to approval by the relevant government authorities. All plans and areas are subject to final survey. Changes done after TOP or CSC also require approval by the relevant authorities and certification by a professional engineer. Furniture/ wardrobes/ cabinets/ movable items shown in the floor plans are only for reference & are not

 **BASEMENT PLAN**